

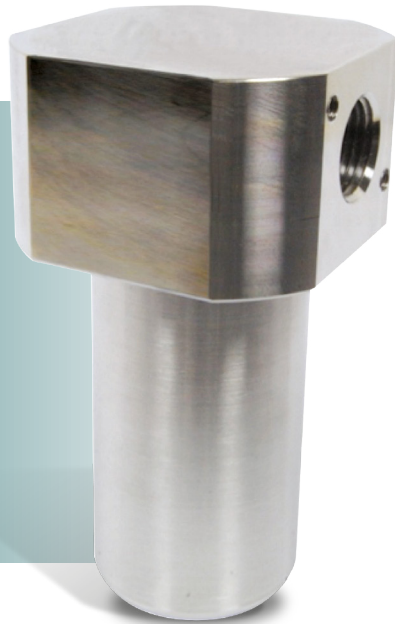
FILTER

Stainless steel

TCR 6XF HI SERIES MOCA CERTIFICATION

STANDARD SERIES FROM 1/4" TO 3/4", 60 BAR

OIL & GAS



Stainless steel 316 L filters designed and manufactured for heavy-duty applications. Entirely made of stainless steel 316 L, compatible with all liquids and gases

APPLICATIONS:

- Pharmaceutical industry;
- Chemical industry;
- Oil & gas and Off Shore applications
- Food industry

FEATURES:

- Particular attention to the low surface roughness, to grant high cleaning standard;
- Compatible for use in aggressive environments;
- Suitable for extreme temperatures (-60°C), critical environments, hazardous applications;
- Suitable to be cleaned and sanitized by the most common processes;

MATERIALS

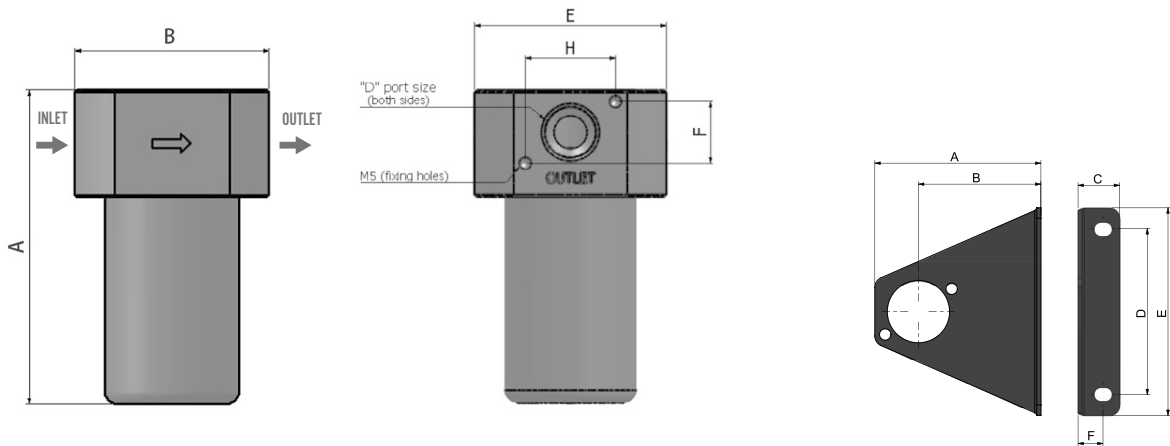
Body, bonnet	316L stainless steel
Bowl	316L stainless steel
Seals	HNBR – EPDM – FKM - Silicone
Internal parts	316L stainless steel
Filter element	Stainless steel 316L (5 µm, 25 µm, 50 µm or coalescent 0.01µm)

TECHNICAL DATA

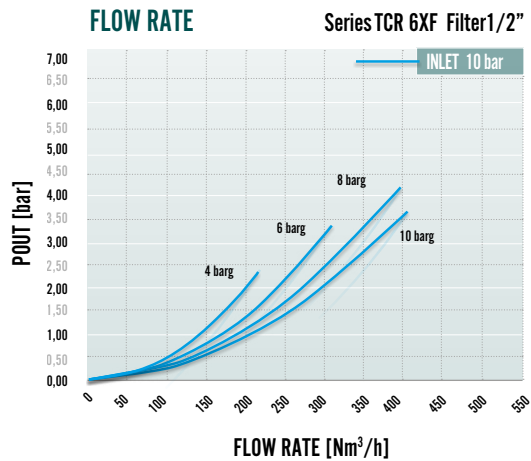
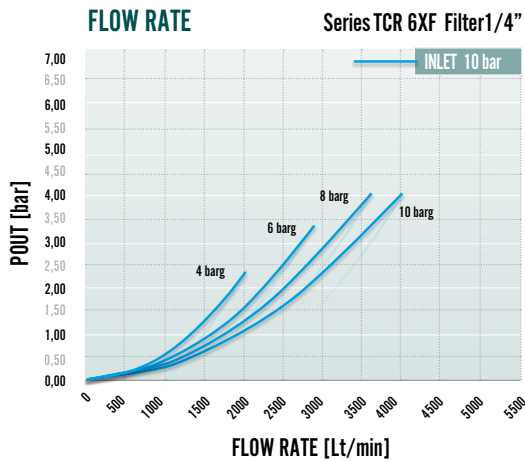
	1/4" - 3/8" SERIES I	1/2" - 3/4" SERIES II
Port thread	1/4" BSPP F – 1/4" NPT F	1" BSPP F – 1" NPT F
P. max Inlet	60 Bar (50 bar Temp>80°C) 16 Bar with automatic drain	
Flow rate *)	260 Nm ³ /h – 4400 dm ³ /min	350 Nm ³ /h – 5900 dm ³ /min
Weight	1.6kg/3lb	2.3kg/5lb
Working temp.	-25°C to +110°C (HNBR) / -50°C to +130°C (EPDM) -60°C to +230°C Silicone / -20°C +200°C FKM (optional)	
Conformity to Directives	2014/34/EU ATEX - ASTM A182 Nace MR0.175	

*) P_{IN} 10bar, P_{OUT} 6.3bar, ΔP 1bar

Stainless steel



SIZE	A	B	C	D	E	F	G	H	I	SIZE	A	B	C	D	E	F
1/4"	108	60	-	1/4"	60	11	-	28	-	1/4"	88	59	20	80	100	12
1/2"-3/4"	11	68	-	1/2"-3/4"	68	22	-	32	-	1/2"-3/4"	88	59	20	80	100	12



OPTIONALS :

- Bracket
- Flanges
- Coalescing microfilter 0.01µm
- Oring Kalrez®